

WHAT'S NEW IN FACTORY MES 8.3

DATA SHEET

Factory MES version 8.3 from Aptean is a release centered on simplifying workflows while focusing on the use of mobile devices to make smarter decisions.

New features include:

- Shift Data Management
- Mobile Quality Application
- Multi-Cell Dashboard
- Labor Tracking
- X-Sync

As always, these new business process improvement items are the result of your feedback, gathered from the Customer Advisory Board, usergroup meetings around the world and from Aptean's Account Management focus that gathers feedback in the field.

Read on to learn about the highlights from this release.

SHIFT DATA MANAGEMENT

A new look with fewer screens, quicker flows and less clicking to do the jobs you need.

MOBILE QUALITY APPLICATION

Use your smart device to photograph defects as you go rather than using slow paper documentation processes.

MULTI-CELL DASHBOARD

Give operators who have multiple lines to monitor a single dashboard that lets them see them all in one screen.

LABOR TRACKING

Analyze how work is going against plan and discover where the deviations are, which in turn are your cost saving opportunities.

X-SYNC

Query, download and interrogate your data with a program you are already familiar with.

SHIFT DATA MANAGEMENT

Shift Data Management is the gateway to extracting data for multi-dimensional analysis, so the interface has been streamlined to enable your shift leaders to rapidly sign off their production metrics.

The number of screens have been reduced to create a simplified and more easily navigable workflow, meaning fewer clicks for you and your staff to get where you need to be. Factory 8.3 features a new protected timeline view which shows the shift picture on just one screen in a Read Only mode. It can be made accessible to more users whilst avoiding unwanted changes in the process.

Crew Period Adjustment has also been updated. You can now assign specific people and times to a specific shift and run, to match the reality of your production needs as well as being able to set a rating for a shift with comments.

In this version, users with the correct permissions can mark a shift as not signed-off, comments can be tracked, and there is also the ability to edit "no-run" periods in the same manner as editing a standard downtime period.

Shift	Target OEE	OEE	Downtime	Uptime	Qty In	Target	Qty Out	Qty Rejected	Sign off comments	Shift Report	Data Quality	Select
demoproductline												
BShift(10/19 06:00 - 10/19 06:02)	0.00%	0.00%	0hrs 2mins	0hrs 0mins	60.00	0.00	20.00	40.00		View	Edit	Good
CShift(10/19 06:02 - 10/19 06:02)	0.00%	0.00%	0hrs 0mins	0hrs 0mins	120.00	0.00	100.00	100.00		View	Edit	Good
DShift(10/19 06:02 - 01/01 00:00)	0.00%	0.00%	0hrs 4mins	0hrs 8mins	100.00	0.00	60.00	0.00		View	Edit	Good
nikproductline												
CShift(10/19 02:38 - 10/19 05:46)	0.00%	0.00%	0hrs 0mins	3hrs 8mins	37.50	0.00	0.00	10.00		View	Edit	Good
BShift(10/19 05:46 - 01/01 00:00)	0.00%	11.30%	0hrs 0mins	0hrs 29mins	110.00	0.00	60.00	10.00		View	Edit	Good

MOBILE QUALITY APPLICATION

Factory 8.3 offers an expansion to the Quality module. You now have the ability to utilize your device's camera to attach photographic evidence to support your quality assurance processes. Damaged product images and their supporting documentation can be uploaded against quality records, further supporting the drive towards a paperless quality environment.

MULTI CELL DASHBOARD

Factory 8.3 provides a multiline view. This gives your operators a single focal point of action allowing them to manage more than one line at a time. Lines that are close together, not warranting individual touchscreens, can be displayed in one consumable view, while maintaining the full traffic light alert dashboard. Track your shift mood, listen to the voice of the shop floor, and stay mobile with full tablet compatibility.

Cell	OEE	Stoppages	Quality	Reviews	Tasks	Materials	Constraints	Maintenance and Safety	Messages	Shift Rating
TESTPRODLINE shift(Rcrew: 1.0) 0001111 (CUBECREWPROD)	0.0% Rate: 0.0% Yield: 100.0% Utilization: 0.0%	1 stoppages 0 slow running	0 overdue 0 due	0 overdue 0 due	1 overdue 0 due	0 overdue 0 due 0 pending counts	0 stoppages 0 slow running	0 due	1 overdue 0 due	3
defaultCell shift(Rcrew: 1.0) 0001114(VinayProd)	0.0% Rate: 0.0% Yield: 100.0% Utilization: 0.0%	0 stoppages 1 slow running	0 overdue 0 due	0 overdue 1 due	0 overdue 0 due	0 overdue 0 due 0 pending counts	2 stoppages 0 slow running	0 due	1 overdue 0 due	1
Rline shift(Rcrew: 1.0) 0001099(Rprod)	0.0% Rate: 0.0% Yield: 100.0% Utilization: 0.0%	1 stoppages 0 slow running	0 overdue 0 due	0 overdue 0 due	0 overdue 1 due	0 overdue 0 due 0 pending counts	0 stoppages 0 slow running	0 due	1 overdue 0 due	
Rline2 No Shift(Rcrew: 1.0) No Production Run	0.0% Rate: 0.0% Yield: 0.0% Utilization: 0.0%	0 stoppages 0 slow running	0 overdue 0 due	0 overdue 0 due	0 overdue 0 due	0 overdue 0 due 0 pending counts	0 stoppages 0 slow running	0 due	1 overdue 0 due	
Rline3 shift(Rcrew: 2.0) 0001074(Rprod)	0.0% Rate: 0.0% Yield: 100.0% Utilization: 0.0%	1 stoppages 1 slow running	0 overdue 0 due	0 overdue 0 due	0 overdue 0 due	0 overdue 0 due 0 pending counts	0 stoppages 0 slow running	0 due	1 overdue 0 due	4

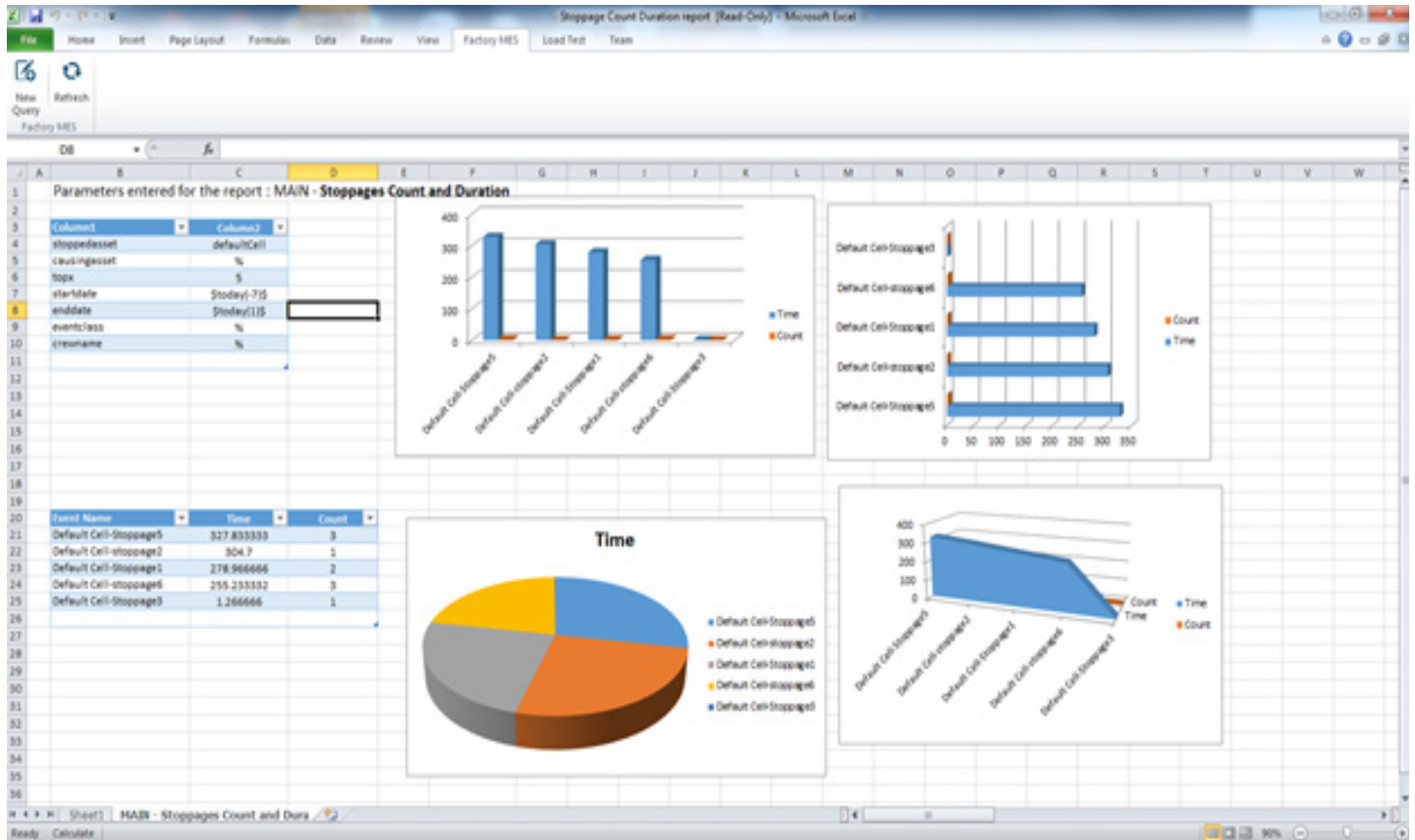
LABOR TRACKING

Factory 8.3 offers the ability to track labor on your production line, from the individual groups of workers and specific roles, right down to the specific individuals making up the active crew. Track the cost of your maintenance teams, understand which groups cost you more money, who the stars are, and analyze labor variance from plan.

Crew Member Name	Crew Member Role	
James	Supervisor	
Robert	Operator	
Geuldas	Operator	
Clive	Operator	

X-SYNC

X-Sync is an Excel plug-in. It enables a connection to a Factory data source, allowing existing report queries to run which then update your reports in Excel, without the need to manually run these reports from scratch each time. It gives you more flexibility around reporting without the need and cost of extra training across unfamiliar programs.



Aptean Factory 8.3 brings powerful functionality to your shop floor. It features mobile device compatibility and powerful tools designed to reduce manual burdens on your staff, while simultaneously optimizing your entire production environment.

To learn more about Aptean Factory MES 8.3 and to discuss your specific needs, please contact your Account Manager today.



Aptean is a leading provider of mission critical enterprise software solutions. We build and acquire industry-focused solutions to support the evolving operational needs of our customers. Our solutions help nearly 5,000 organizations stay at the forefront of their industries by enabling them to operate more efficiently, thereby ensuring higher customer satisfaction.

For more information, visit www.aptean.com.