

# AXIS DATA WAREHOUSE

SQL-based Data Warehouse for Ad-Hoc Reporting from Axis ERP

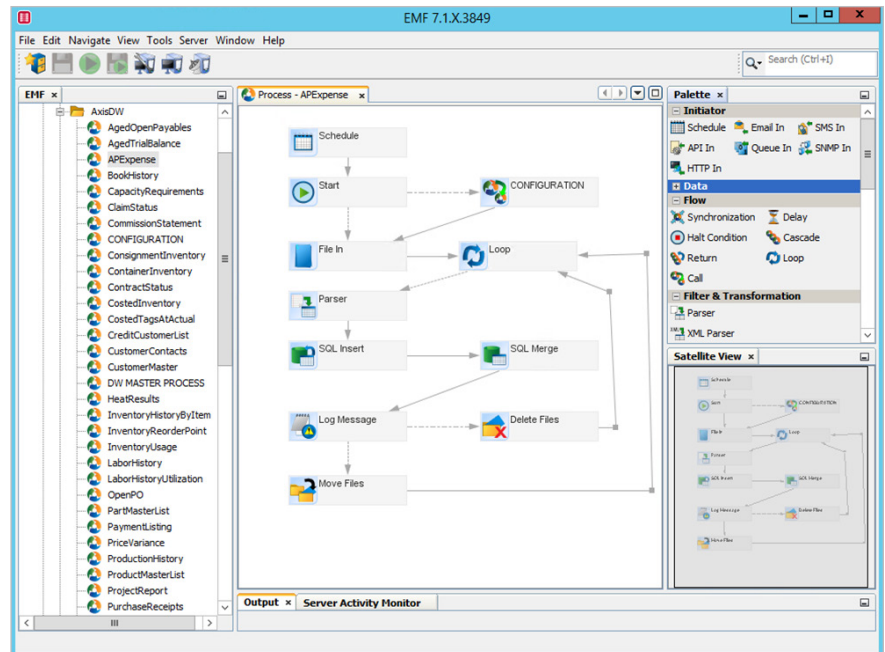
## DATA SHEET

### EXTEND REPORTING & BI

Axis ERP generates a tremendous amount of information about your operation; but sometimes you need to get that data out of Axis in ways that the built-in reports and analytics don't offer out of the box.

Axis Data Warehouse supports your ad-hoc reporting needs by providing a complete SQL-based data warehouse for Axis ERP, to enable external reporting, business intelligence, custom integrations or support other applications that require access to Axis ERP data. The Axis Data Warehouse includes a complete Extract, Transform and Load (ETL) process based on Axis ERP's built-in data exports to extract the data using proven business logic; and Aptean's Event Management Framework to transform and load the data to a Microsoft SQL database.

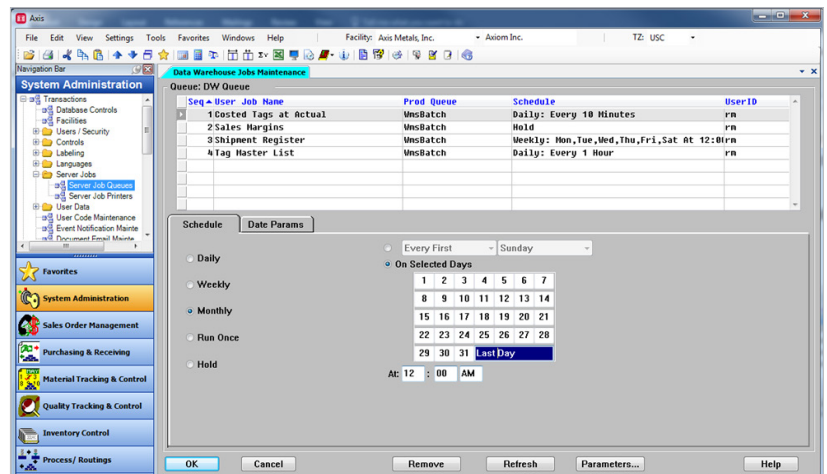
Any third-party SQL compatible reporting or analysis tool can be used to create your custom reports on your own without having to understand the complexities of the Axis ERP database design. Tools such as Crystal Reports, Microsoft SQL Server Reporting Services, QlikView or even Excel are easily supported.



# KEY BENEFITS

Axis Data Warehouse enables your IT staff to develop the ad-hoc reports, analytics or integrations they need to support your business, without a deep understanding of the Axis ERP database. Axis Data Warehouse provides your IT team with:

- **Consistent, reliable and accessible data** – Summarized data is extracted from Axis ERP using data exports built into Axis reports and utilities to ensure that the business logic is properly applied. The data is stored in a flattened table structure that mimics the exported data, with suitable indices and keys for relational queries.
- **Out of the box ETL** – The tools used to Extract, Transform and Load data from Axis ERP to your SQL-based data warehouse are provided with the software. Over 50 pre-defined processes are included.
- **Data Warehouse Jobs Manager** – This is built into Axis ERP to help schedule required exports. Configure parameters such as frequency, facility, date and financial company. The Queue Manager automatically triggers the ETL process.
- **Easily Customizable Design** – Axis Data Warehouse is built to be fully customizable if necessary, to add more tables, or new data fields to the warehouse database.



# FEATURES

Axis Data Warehouse lets your IT team build their own reports with the tools they normally use. Features include:

- SQL scripts to create the Data Warehouse schema.
- Out of the box Extract, Transform and Load processes based on Axis ERP's built-in data exports and Aptean's Event Management Framework.
- Data Warehouse Jobs Maintenance schedules export daily at set time or intervals (down to 10 minutes), weekly or monthly on select days, or once; all with configurable date parameters.
- Multi-facility and multi-company exports may be scheduled for each facility and company, each with their own parameters.
- ETL process are automatically launched once an export is created via an HTTP message sent to the server.
- Exports are automatically deleted or archived when a ETL process is completed.
- A runtime version of Aptean Event Management Framework allows configuration of built in ETL processes. The full version of EMF may be purchased separately to add new ETL processes.
- Works with Axis Analytics powered by QlikView (optional, and sold separately) to add data to its pre-configured analytics.
- Supports Axis ERP 6.1 and above with Progress OpenEdge 10.2B or higher. Older versions may require additional services to support them.
- Supports Microsoft SQL server 2012 or higher, and compatible databases (database software not included).
- Supports any third-party SQL compatible reporting tool, such as Crystal Reports, Microsoft SQL Server Reporting Services, QlikView or Microsoft Excel (reporting tools are not provided).

# AVAILABLE EXPORTS & ETL PROCESSES

- Aged Open Payables
- Price Variance Report
- Expense Report
- Payment Listing
- Aged Trial Balance
- Sales Distribution to A/R by Account
- Parts Export File
- Product Export File
- Book History
- Backlog
- Shipment Register
- Shipment Performance
- Consignment Inventory
- Commission Statement
- Sales Margins
- Claim Status
- Customer Master
- Credit Customer Listing
- Customer Contacts and Reps
- Contract Status
- Sales Export File
- Quote Register
- Quote Export File
- Standard Cost Summary
- WIP Valuation Detail
- WIP Valuation at Actual
- Costed Inventory
- Costed Tags at Actual
- Transaction Register by Account
- Labor History
- Labor History Utilization
- Detail Report
- Trial Balance
- Project Report
- Inventory Stock Status
- Tag Master List
- Container Inventory by Customer
- Supplier Report
- Reorder Point Report
- Inventory Usage
- Inventory History by Item
- Production History
- Scrap by Reason
- Work Order Status
- Capacity Requirements
- Capacity Requirements Processor
- Open PO's by Buyer
- Purchase Receipts
- Vendor Performance
- Open/Closed Purchase Requisitions
- Vendor Master List
- Heat Results by Met Grade
- Test Results by Work Center
- Tags On Hold
- Tag Hold History

## NEXT STEPS

Axis Data Warehouse is available for download from the Apteian Customer Support Portal. Customers will need to contact their Account Manager to purchase the software, and some services work will be required to install and configure the software. Customers must supply their own SQL-compatible database for the Data Warehouse, and their preferred reporting tools.

The full version of Apteian Event Management Frame may be purchased to add new tables, customize workflows or add more processes. Consult your Account Manager for details.



Apteian is a leading global provider of mission critical enterprise software solutions. We build, acquire, and integrate industry-focused solutions to support the evolving operational needs of our customers, enabling them to increase operational efficiencies and improve customer satisfaction and loyalty. To learn how Apteian can help your organization stay at the forefront of your industry, visit [www.apteian.com](http://www.apteian.com).